

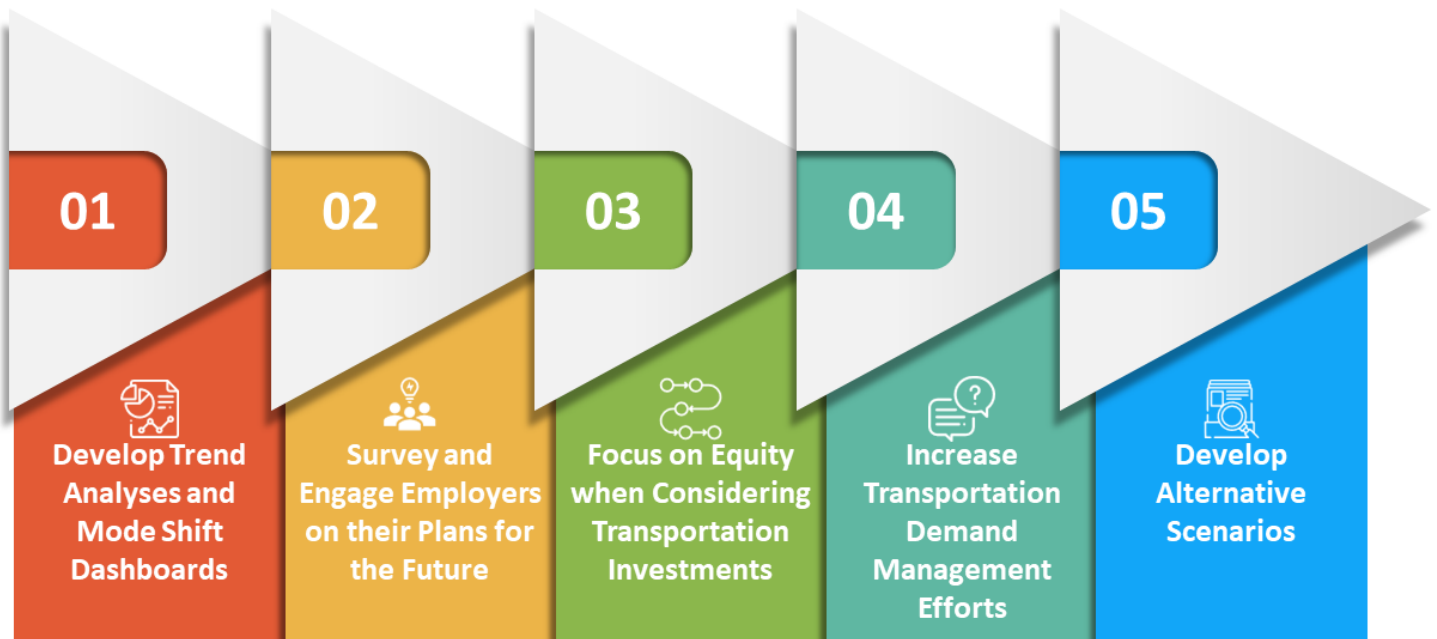


**Episode 11 Downloadable:
5 STEPS TO PLANNING FOR
POTENTIALLY SUSTAINED
INCREASES IN TELEWORKING
AFTER COVID-19**

**Why Do We Need to Evaluate Changes
in Mode Shift After COVID-19?**

With a record jump in people working from home, and the continued interest from workers in working from home full-time or part-time, transportation planners will need to understand the impacts this mode-shift will have on the future of travel. Changes can impact project needs, tax revenue, and other factors that are important.

**5 STEPS TO PLANNING FOR POTENTIALLY SUSTAINED INCREASES
IN TELEWORKING AFTER COVID-19**



The Modern Mobility Podcast is brought to you by Modern Mobility Partners, a women and minority owned full-service transportation planning consulting firm located in Atlanta, GA. For other podcast downloads or to learn more about our team, services, and experience, visit www.modernmobilitypartners.com.

